

05

Section **05**

Data Section

- 58 ▶ Consolidated Financial Summary
- 59 ▶ Non-financial Summary
- 62 ▶ Information for Investors
- 63 ▶ Company Overview

Data

Consolidated Financial Summary

Financial indicators (Japan GAAP)

		FY2014	FY2015	FY2016	FY2017	FY2018	FY2019	FY2020	FY2021	FY2022	FY2023	FY2024
Operating results												
Net sales	(Millions of yen)	193,769	220,731	206,072	219,849	255,637	228,253	209,420	236,503	314,312	344,601	339,233
Overseas net sales ratio	(%)	73.4	77.3	76.1	78.2	78.1	78.4	77.6	81.3	85.8	84.8	82.1
Operating profit	(Millions of yen)	9,643	12,826	14,402	14,272	16,813	8,677	8,050	10,931	12,836	16,242	16,380
Ordinary profit	(Millions of yen)	8,983	11,382	14,430	14,606	17,423	8,744	8,653	12,532	14,284	18,896	17,529
Profit attributable to owners of parent	(Millions of yen)	4,652	7,559	9,706	11,532	10,470	5,633	6,532	8,878	10,270	13,240	12,440
Depreciation	(Millions of yen)	17,343	22,855	21,289	19,739	21,263	19,649	19,721	15,173	17,414	19,292	34,372
Capital expenditures	(Millions of yen)	43,671	20,181	22,394	21,918	22,384	30,117	21,557	14,224	24,537	12,096	19,456
Research and development expenses	(Millions of yen)	2,566	2,161	2,242	2,031	2,373	2,418	2,444	2,445	2,608	3,072	3,130
Financial position												
Total assets	(Millions of yen)	227,690	215,285	208,584	224,855	225,296	232,188	237,955	282,540	288,698	304,129	321,386
Net assets	(Millions of yen)	116,044	114,775	119,340	130,502	133,480	131,598	145,052	163,924	176,695	205,393	212,357
Net interest-bearing debt	(Millions of yen)	55,241	45,684	28,232	28,940	21,153	21,723	17,216	22,995	6,933	△4,695	6,421
Cash flows												
Cash flows from operating activities	(Millions of yen)	16,562	31,771	32,174	24,448	33,543	22,933	25,120	14,064	37,270	37,461	22,540
Cash flows from investing activities	(Millions of yen)	△36,792	△21,420	△14,601	△26,809	△25,620	△25,004	△15,527	△18,860	△16,022	△30,892	△30,045
Cash flows from financing activities	(Millions of yen)	13,419	△7,944	△14,809	1,502	△6,975	13,532	△17,343	12,546	△17,582	△16,379	5,774
Free cash flow	(Millions of yen)	△20,230	10,351	17,573	△2,361	7,923	△2,071	9,593	△4,796	21,248	6,568	△7,505
Cash and cash equivalents	(Millions of yen)	11,221	14,604	18,189	17,657	18,141	31,841	25,970	35,968	40,248	32,846	31,201
Per share information												
EPS (earnings per share)	(Yen)	106.01	172.93	222.46	264.28	243.11	131.35	152.15	206.68	238.87	307.52	289.39
BPS (book-value per share)	(Yen)	2,385.72	2,371.99	2,461.76	2,708.64	2,838.35	2,803.15	3,117.66	3,543.98	3,829.15	4,449.21	4,626.10
Cash dividends per share	(Yen)	24.00	32.00	36.00	39.00	46.00	48.00	50.00	56.00	58.00	67.00	87.00
Payout ratio	(%)	22.6	18.5	16.2	14.8	18.9	36.5	32.9	27.1	24.3	21.8	30.1
Management indicators												
Operating profit margin	(%)	5.0	5.8	7.0	6.5	6.6	3.8	3.8	4.6	4.1	4.7	4.8
Ordinary profit ratio	(%)	4.6	5.2	7.0	6.6	6.8	3.8	4.1	5.3	4.5	5.5	5.2
Net profit ratio	(%)	2.4	3.4	4.7	5.2	4.1	2.5	3.1	3.8	3.3	3.8	3.7
Equity ratio	(%)	46.0	48.1	51.5	52.6	53.9	51.8	56.2	53.9	57.1	63.0	61.6
ROE	(%)	4.8	7.3	9.2	10.2	8.7	4.7	5.1	6.2	6.5	7.4	6.4
ROA*1	(%)	2.0	3.5	4.7	5.1	4.6	2.4	2.7	3.1	3.6	4.4	4.1
ROIC	(%)	3.9	5.5	6.5	5.9	7.1	3.4	3.1	3.5	4.2	4.9	4.6

*1 Net income divided by total assets.

Non-financial Summary

Environmental data

Energy consumed

(GJ)

	FY2021	FY2022	FY2023	FY2024
Total usage	962,080	960,427	1,014,109	943,909
Japan	155,857	158,838	175,167	181,684
North America	391,617	406,329	438,288	398,226
Europe	52,391	49,882	60,800	56,288
Asia	116,235	118,255	121,326	113,368
China	214,408	197,587	189,987	164,486
South America	31,572	29,536	28,541	29,858

Water resource usage (water withdrawal)

(1,000m³)

	FY2021	FY2022	FY2023	FY2024
Total usage	439	432	382	366
Third-party water				
Japan	59	56	60	58
North America	65	62	49	41
Europe	31	40	10	10
Asia	87	83	82	92
China	181	174	163	146
Subtotal	424	415	363	347
Groundwater				
Asia	6	7	9	9
South America	9	10	10	10
Subtotal	15	18	18	19

Amount of waste generated

(t)

	FY2021	FY2022	FY2023	FY2024
Total amount generated	3,262	3,320	3,315	3,676
Japan	791	677	682	674
North America	622	531	639	690
Europe	1,018	1,065	1,165	1,241
Asia	353	385	438	374
China	336	576	303	499
South America	142	87	87	198

Greenhouse gas emissions

(t-CO₂)

	FY2021	FY2022	FY2023	FY2024
Scope1+2 total	97,358	92,033	89,418	78,239
Scope1 (Direct emissions)				
Japan	880	755	874	743
North America	5,668	6,278	6,222	5,345
Europe	692	482	476	475
Asia	554	479	511	353
China	494	347	289	251
South America	178	173	170	56
Subtotal	8,466	8,514	8,542	7,223
Retired carbon credits (portion applied to Scope 1)				
North America	261	801	612	858
South America		40	170	56
Subtotal	261	841	782	914
Total	8,205	7,673	7,760	6,309
Scope 2 (market-based)				
Japan	10,739	4,859	81	531
North America	28,738	33,851	36,709	33,334
Europe	1,185	237	351	419
Asia	14,992	15,408	15,688	13,724
China	32,757	30,005	28,829	23,763
South America	742	0	0	159
Subtotal	89,153	84,360	81,658	71,930
Scope3	1,956,980	2,035,739	2,139,146	1,922,530
Cat.1: Purchased Goods and Services	1,876,372	1,953,878	2,036,158	1,787,638
Cat.2: Capital Goods	56,531	55,717	75,270	114,644
Cat.3: Fuel- and Energy-Related Activities	15,457	17,588	18,440	15,538
Cat.4: Upstream Transportation and Distribution	3,164	2,533	2,709	2,608
Cat.5: Waste Generated in Operations	1,118	1,034	1,097	430
Cat.6: Business Travel	1,059	1,073	1,086	1,064
Cat.7: Employee Commuting	3,279	3,917	4,386	608


*FY2024 environmental data marked with a has received assurance from an independent third party.



- Scope of assurance: FY2024 Scope 1 and 2 emissions for the Company, 19 consolidated subsidiaries and one affiliate accounted for by the equity method; Scope 3 (Category 1-7, domestic only for Category 4 and 7); retired carbon credits (portion applied to Scope 1); water usage
- Level of assurance: limited assurance

Non-financial Summary

Assurance from independent third party

In order to enhance the transparency of environmental data and disclose information while guaranteeing its reliability, the Company has received limited assurances based on ISO 14064-3:2019 and ISAE 3000 from an independent third party assurance body. FY2024 environmental data in this report that has received such assurances is marked with a  symbol.

This assurance, and the introduction by the Company of a process for identifying and calculating environmental impact data, is a significant step towards decarbonization.

Furthermore, because the Company has clearly set out a consistent procedure that it uses when making calculations, the assurance becomes even more useful in terms of the clarity and accuracy of greenhouse gas emissions, and in terms of comparing the effects of decarbonization measures over the course of many years, which is an area in which certain customers are becoming increasingly demanding. This assurance will increase the trust placed in the Company's projects by future customers, investors, suppliers, and all other stakeholders, and underpin our commitment to our basic policy.

Scope of assurance

- Direct (Scope 1) and indirect (Scope 2) emissions of CO₂ from energy consumed in corporate activities
- Scope 3 supply chain emissions
(Category 1-7, domestic only for Category 4 and 7)
- Retired carbon credits (portion applied to Scope 1)
- Water usage

*SOCOTEC Certification Japan Co., Ltd.

An international third-party assurance body headquartered in France, which conducts rigorous inspections based on standards that emphasize fairness at all times.

It has an extensive track record of third-party assurance in Japan for emissions reduction projects, organizational emissions, and other endeavors.



Non-financial Summary

▶ Personnel and labor data

Number of employees in the G-TEKT Group

	FY2021	FY2022	FY2023	FY2024
	(people)			
Japan segment	1,528	1,573	1,574	1,698
Employees	1,151	1,168	1,166	1,209
Temporary employees	377	405	408	489
North America segment	2,281	2,386	2,422	2,378
Employees	2,139	2,137	2,176	2,167
Temporary employees	142	249	246	211
Europe segment	738	891	1,071	1,061
Employees	695	820	1,031	1,058
Temporary employees	43	71	40	3
Asia segment	2,070	2,051	2,105	2,095
Employees	1,589	1,547	1,485	1,498
Temporary employees	481	504	620	597
China segment	2,571	2,542	2,300	1,734
Employees	1,933	1,929	1,793	1,459
Temporary employees	638	613	507	275
South America segment	615	626	679	771
Employees	615	626	679	771
Temporary employees	0	0	0	0

* The number of employees is the number of persons as of the end of the fiscal year, and the number of temporary employees is an approximate average number of persons during the year.

Number of employees hired and retention rate (Japan only)

	FY2021	FY2022	FY2023	FY2024
	(people)			
New graduate hires	14	31	13	13
Mid-career hires	10	31	61	56
Retention rate (new graduates, after 3 years)	71.0%	88.2%	78.6%	80.6%

* New graduates include postgraduate, undergraduate, technical college and vocational school graduates. The retention rate is the percentage of the number of employees after three years from the year of employment.

Status of utilization and usage of WLB-related systems (Japan only)

	FY2021	FY2022	FY2023	FY2024
	(people)			
Number of employees acquiring childcare leave	8	5	8	16
Males	2	5	7	13
Acquisition rate (male)	7%	21%	32%	45%
Females	6	0	1	3
Acquisition rate (female)	100%	—	100%	100%
Number of employees acquiring childbirth leave	36	20	23	30
Males	30	20	19	27
Females	6	0	4	3
Number of days of paid leave taken	13.4	15.0	15.1	14.9
Acquisition rate	70%	78%	80%	79%

* The childbirth leave system is an original system of the Company.

Number of reports to the corporate ethics reporting hotline (Japan only)

	FY2021	FY2022	FY2023	FY2024
	(cases)			
Number of reports to the corporate ethics reporting hotline	8	13	9	13
Human rights and harassment	0	9	4	9
Work environment	4	1	1	1
Injustice	1	1	0	0
Manners and morals	1	0	1	0
Appropriate business execution	2	2	3	3
Quality	0	0	0	0
Other	0	0	0	0

* There are cases where more than one incident is reported per report.

Intellectual property

	FY2021	FY2022	FY2023	FY2024
	(cases)			
Number of published applications	5	18	11	15
Number of patent granted	16	10	18	17

* With the purpose of utilizing intellectual property rights in our business, we are utilizing the Accelerated Examination System.

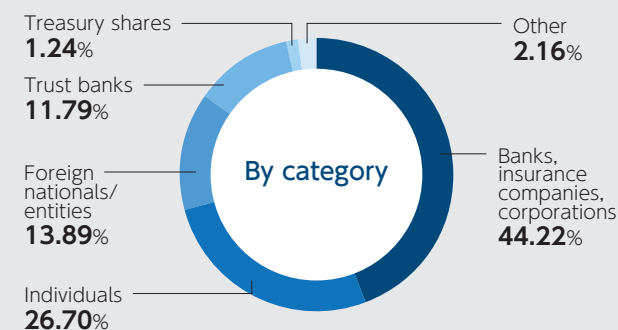
Information for Investors

Basic stock information

Fiscal year	April 1 to March 31 of the following year
Shareholders' record date for receiving year-end dividends	March 31
Shareholders' record date for receiving interim dividends	September 30
Ordinary General Meeting of Shareholders	Every June
Shareholders' register administration and special account management agent	Mitsubishi UFJ Trust and Banking Corporation
Contact point	Mitsubishi UFJ Trust and Banking Corporation Stock Transfer Agency PO Box 29, Shin-Tokyo Post Office, 137-8081 Phone: 0120-232-711 (toll-free)
Stock exchange listing	Prime Market, Tokyo Stock Exchange

Status of shares (as of March 31, 2025)

Total number of shares authorized	100,000,000 shares
Total number of shares issued (including 545,197 treasury shares)	43,931,260 shares
Number of shareholders (increase of 5,511 persons from the end of FY2024)	23,388

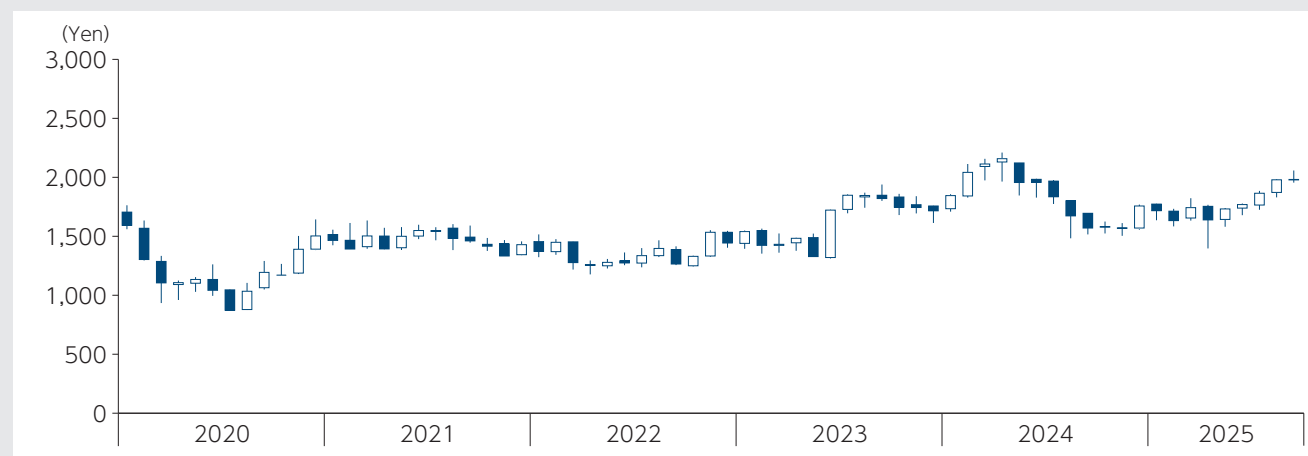


Name of shareholders	Number of shares held	Shareholding ratio (%)
Honda Motor Co., Ltd.	13,035,098	30.04
The Master Trust Bank of Japan, Ltd. (Trust Account)	3,010,700	6.94
KP K.K.	2,200,800	5.07
TK Holdings Inc.	2,194,344	5.06
Custody Bank of Japan, Ltd. (Trust Account)	1,816,291	4.19
Naohiro Takao	1,286,576	2.97
Tomohiro Yoshida	1,125,200	2.59
Toshitsugu Kikuchi	905,901	2.09
RE FUND 107-CLIENT AC	688,100	1.59
STATE STREET BANK AND TRUST COMPANY 505223	571,992	1.32

*1. The shareholding ratio is calculated by deducting 545,197 shares of treasury shares.

*2. Treasury shares does not include 286,391 shares of the Company's stock held by Custody Bank of Japan, Ltd. (Trust Account) as performance-linked share-based remuneration for the Company's officers.

Stock price



Company Overview (as of September 30, 2025)

Company name	G-TEKT CORPORATION
Founded	April 1, 1947
Established	November 4, 1953
Share capital	¥4,656,227,715
President, Chief Executive Officer	Naohiro Takao
Description of business	Manufacturing and sales of auto body components, transmission parts, stamping dies/weld equipment, etc.



IR information such as financial results and press releases can be found on the Company's website.

<https://www.g-tekt.jp/>



Sites

Japan

Head Office

Engineering, R&D, quality assurance

G-TEKT Technical Center (engineering)
G-TEKT TOKYO LAB (research and development)
G-TEKT Quality Assurance Center (quality assurance)

Sales

C&C Tochigi (product development/sales)

Production

Saitama Plant (manufacturing of auto body components)
Hamura Office, Saitama Plant (manufacturing of auto body components)
Shiga Plant (manufacturing of auto body components/die design and production/welding facility design)
Tochigi Plant (manufacturing of transmission parts/die design)
Gunma Plant (manufacturing of auto body components/die design and production)
Chubu Plant (manufacturing of auto body components)

Overseas

North America

United States

Jefferson Industries Corporation (manufacturing of auto body components)
G-TEKT North America Corporation (research and sales)
Jefferson Southern Corporation (manufacturing of auto body components)
Austin Tri-Hawk Automotive, Inc. (manufacturing of auto body components)
G-TEKT America Corporation (manufacturing of auto body components)

Canada

Jefferson Elora Corporation (manufacturing of auto body components)

Mexico

G-TEKT MEXICO CORP. S.A. DE C.V.
(manufacturing of auto body components and transmission parts)
G-ONE AUTO PARTS DE MEXICO, S.A. DE C.V.
(manufacturing of auto body components)

*Equity-method affiliates

South America

Brazil

G-KT do Brasil Ltda.
(manufacturing of auto body components)

Europe

United Kingdom

G-TEKT Europe Manufacturing Ltd.
(manufacturing of auto body components)
G-TEKT Europe Manufacturing Ltd. (No. 2 Plant)
(manufacturing of auto body components)
G-TEKT Europe Manufacturing Ltd. (No. 3 Plant)
(manufacturing of auto body components)
G-TEKT Europe Manufacturing Ltd. (No. 4 Plant)
(manufacturing of auto body components)

Slovakia

G-TEKT Slovakia, s.r.o.
(manufacturing of auto body components)

Germany

G-TEKT (Deutschland) GmbH. (research and sales)

China

Auto Parts Alliance (China) Ltd.
(manufacturing of auto body components and die production)
Auto Parts Alliance (China) Ltd. (No. 2 Plant)
(manufacturing of auto body components and transmission parts)
Wuhan Auto Parts Alliance Co., Ltd.
(manufacturing of auto body components and die production)
Conghua Auto Parts Alliance (China) Ltd.
(manufacturing of small pressed parts for auto bodies)
Guangzhou Nansha Auto Parts Alliance (China) Ltd
(manufacturing of auto body components)

Asia

Thailand

G-TEKT (Thailand) Co., Ltd.
(manufacturing of auto body components and die production)
G-TEKT Eastern Co., Ltd.
(manufacturing of auto body components and die production)
G-TEKT Eastern Co., Ltd. (No. 2 Plant)
(manufacturing of auto body components)

India

G-TEKT India Private Ltd.
(manufacturing of auto body components)

Indonesia

PT.G-TEKT Indonesia Manufacturing
(manufacturing of auto body components and transmission parts)